



EAH HOUSING

Lightfighter Village

229 Hayes Circle Marina, CA 93933



Waitlist Now Open Accepting Pre-applications

**Permanent
Supportive
Housing for
Veterans and
Families**

Lightfighter Village, co-developed by EAH Housing and the Veterans Transition Center (VTC) of Monterey, provides stable, supportive housing for veterans in Marina, CA. This community offers 71 apartments designed for veterans, including 36 units reserved for chronically homeless veterans and their families. Of the 71 units at Lightfighter Village, 36 are designated for chronically homeless veterans and their families. EAH Housing will prioritize these units based on highest need rather than “first-come-first-served.” The Lightfighter Village service coordinator will work with the VA and Monterey County’s Coordinated Entry System (CES) to determine eligibility and prioritize applicants.

APARTMENT FEATURES

- Energy efficient appliances
- Window coverings

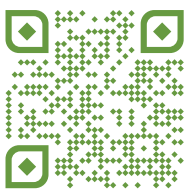
COMMUNITY AMENITIES

- Bike storage room
- Community room
- Computer room
- Resident’s Lounge
- On-site laundry
- Parking
- Pet-friendly
- On-site Service Office
- On-Site Management Office

RESIDENT SERVICES

- Resident Services Coordinator
- Wellness programs

APPLY ONLINE TODAY!



EAHHousing.org/apartments/Lightfighter-Village

To request a paper application, call (831) 920-4346. Mailed applications must be post-marked by the deadline.



CONTACT / Management Office

220 Twelfth Street, Marina, CA 93933

Phone: (831) 920-4346, California Relay Service: 711

Web: EAHHousing.org/apartments/Lightfighter-Village

Email: LV-management@eahhousing.org

HI Lic. RB-16985 | CA Lic. 853495



QUALIFYING CRITERIA & FLOOR PLANS

Age	Minimum Occupancy Standards	Application Fee	Credit Rating
Head of household must be 18 yrs. old	1 BR / 1-3 ppl 2 BR / 2-5 ppl	Application fee \$46 per person up to \$138 for general affordable units.	No credit evaluation required for PSH Criminal background checks apply

Minimum income not required since all tenants pay 30% of their monthly adjusted income in rent.

Unit Type Area Medium Income (AMI)	Minimum Monthly Income	Maximum Income (Most Restrictive)	Net Rent * (Less UA)	Security Deposit *
Studio / 30% AMI NPLH-COSR	None	\$27,810 (1 per) \$31,800 (2 ppl)	30% Tenant's Adjusted Income	TTP
2 BR / 30% AMI NPLH - COSR	None	\$31,800 (2 ppl) \$35,760 (3 ppl) \$39,720 (4 ppl) \$42,900 (5 ppl)	30% Tenant's Adjusted Income	TTP

* Rents and Deposits are Subject to Change

PSH DESIGNATED UNITS (NPLH)

Unit Size / AMI	Number of Units	Minimum Occupancy Standard
Studio / 30% AMI	15	1 person
2 BR / 30% AMI	2	2 person
Total	17	

ACCESSIBILITY UNITS

Accessible Feature Type	Studio	2 Bedroom	Total
Mobility	7	1	8
Communication	2	1	3
Total	9	2	11

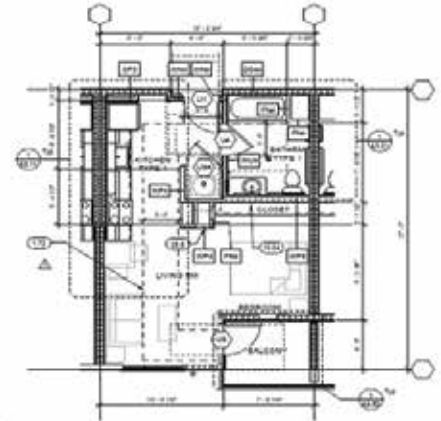


EAH HOUSING

Lightfighter Village

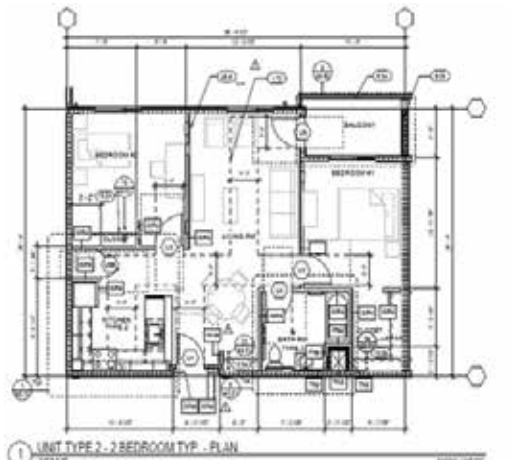
229 Hayes Circle Marina, CA 93933

This housing is available without discrimination based on race, color, national origin, sex, religion, ancestry, genetic information, income, age, marital or familial status, sexual orientation, gender identity, disability, or any other legally protected category. Persons with disabilities may request reasonable accommodations, modifications, accessible units, or auxiliary aids to ensure equal access to housing. If you or a household member requires specific accommodations due to a disability, please contact our staff. You may use the Lightfighter Village Reasonable Accommodation Form or provide a letter from a third party certifying your needs.



① UNIT TYPE 1 - STUDIO TYP. - PLAN
1/4" = 1'-0"
0 1 2 4 FEET

Plan A1 (Studio) 419 sq. ft.



① UNIT TYPE 2 - 2 BEDROOM TYP. - PLAN
1/4" = 1'-0"
0 1 2 4 FEET

Plan 2B (2 BR) 858 sq. ft.

***Sample unit plans. Other options are available.**